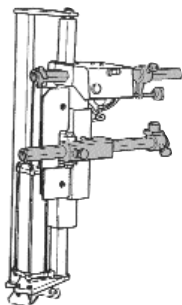


Corghi Power Assist Units and PAX Accessory Kits

Designed for low-profile run-flat and high-performance tires. Eliminates wheel and tire bead damage and allows a single operator to change even the most difficult tires. Fits Corghi models A2010TI, A2019TI and A2024TI. See catalog page 4 for features and specifications. Provides PAX capability when used with PAX kit.

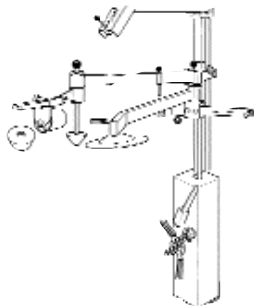


SP2000 Adapter Kit

Models A2019TI and A2024TI

- Produced until March 1999 (ex. S/B 903) Code 244644A
- Produced from April 1999-April 2004 Code 245415A
- Produced from April 2004-May 2004 Code 100026A

PU1500 Power Assist Unit



Allows one operator to change even the most difficult tires on Corghi swing arm/tilt back machines. Provides PAX capability when used with PAX kit No. 100012A.

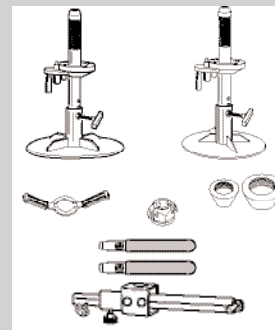


Fits Corghi Swing Arm Series Articulating Arm No. 100064A

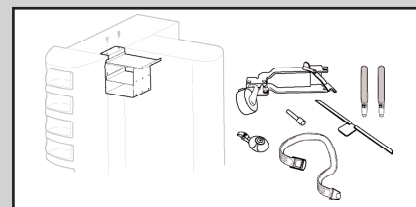
See page 5

Complete unit consists of No. 100027A, No. 100030A, and No. 100031A.

PAX Kit No. 100012A



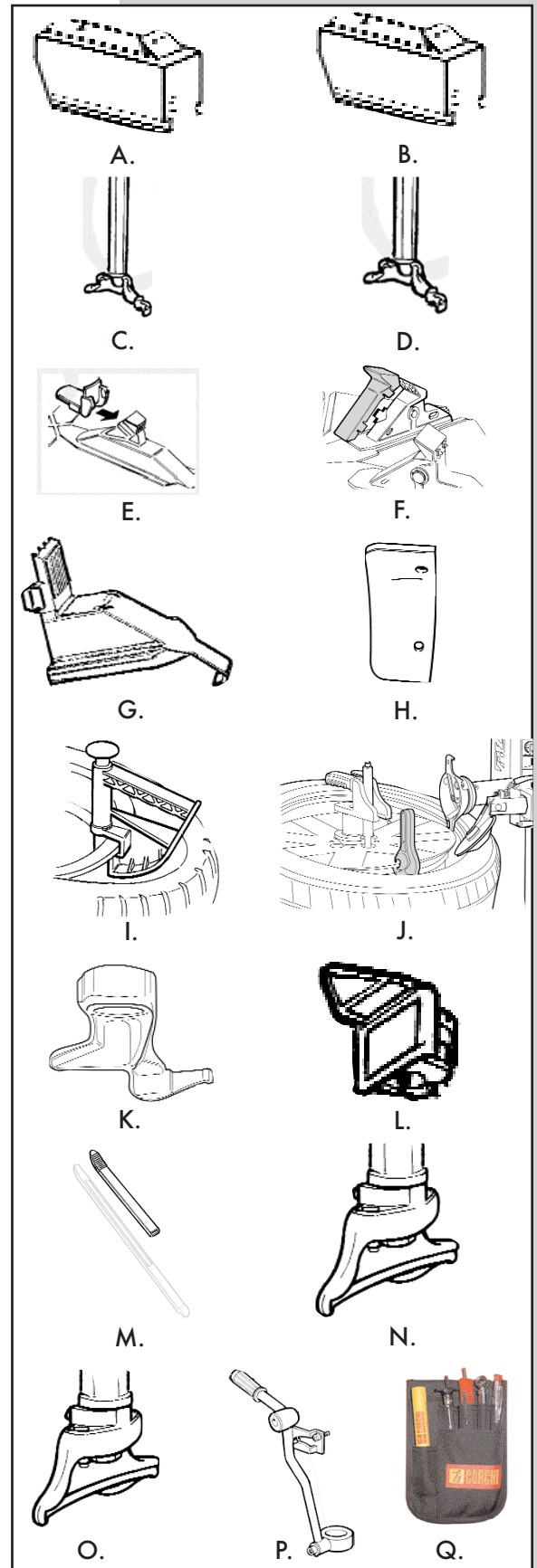
AM26 Artiglio Master PAX Kit No. 260860A and No. 100021A



Call 800-232-2190 for Your Specific Kit Number

Optional Tire Changer Accessories

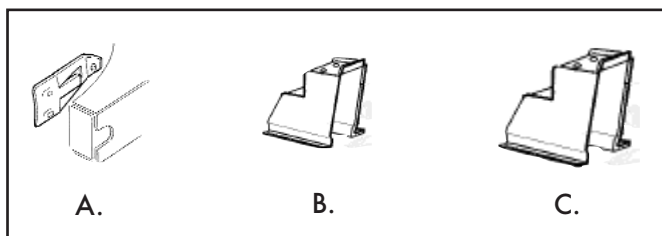
- A) 8"-24" Wheel Adapters **No. 263518A**
 • 9820 before 010110483
 • 9212 before 010111235
 • 2019 before 9031389
 • 2010 before 9041149
- B) 8"-24" Wheel Adapters **No. 263517A**
 • 9820 after 010110483
 • 9212 after 010111235
 • 9220
 • 9824 (Up to 28" wheel)
 • 2019 after 9031389
 • 2010 after 9041149
 *including these serial numbers
- C) Offset hex shaft for 8"-24" adapters **No. 263548A**
 *for 2019 and 2024(excludes mount/demount head).
- D) Offset hex shaft for 8"-24" adapters **No. 100015A**
 *for MTS series (excludes mount/demount head).
- E) Plastic Jaw Protectors/Alloy Rim **No. 243268A**
 • 9820 before 010110483
 • 9212 before 010111235
 • 2019 before 9031389
 • 2010 before 9041149
 *set of 4
- F) Plastic Jaw Protectors/Alloy Rim **No. 254343**
 • 9820 after 010110483
 • 9212 after 010111235
 • 9220
 • 9824
 • 2019 after 9031389
 • 2010 after 9041149
 • 2024
 *including these serial numbers
 *set of 12
- G) Plastic Jaw Protector(Cover Teeth) **No. 260755A**
 • 9820 after 010110483
 • 9212 after 010111235
 • 2019 after 9031389
 • 2010 after 9041149
 • 9220
 • 9824
 • 2024
 *including these serial numbers
 *set of 12
- H) Bead Breaker Blade Protector **No. 258383A**
 S/N 000900000 and after (set of 6)
- I) Bead Clamp **No. 435685A**
- J) Bead Clamp Contoured Wheels **No. 457181A**
- K) Mount/Demount Head (all models) **No. 252083**
- L) Plastic Inserts for Mount/Demount Head (Set of 10) **No. 254341A**
- M) Plastic Tire Lever Covers (6) **No. 246241A**
- N) Plastic Mount/Demount Head (Complete Assembly) **No. 250309A**
- O) Plastic Mount/Demount Head (Replacement Part) **No. 450310A**
- P) Bead Depressing Lever (9419/9820/9824/9826) (9212/9220) **No. 242834A**
No. 244645A
- Q) Tire Maintenance Kit **No. 900888A**



Tire Changer Optional Accessories

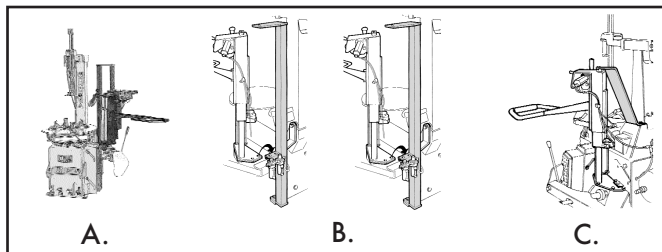
Motorcycle Applications

- | | |
|----------------------------------------------------------------------------------------------------------------------------------------------------------------------------------------------|-------------|
| A) M/C Bead Breaker Blade | No. 260402A |
| B) M/C Adapter (set of 4) | No. 252087A |
| <ul style="list-style-type: none"> • 9212 before S/N: 010111235 • 9820 before S/N: 010110483 • 2019 before S/N: 9031389 • 2010 before S/N: 9041149 | |
| C) M/C Adapter (set of 4) | No. 258650A |
| <ul style="list-style-type: none"> • 9212 after S/N: 010111235 • 2019 after S/N: 9031389 • 2010 after S/N: 9041149 • 9820 after S/N: 010110483 | |



EMT/Run Flat Application

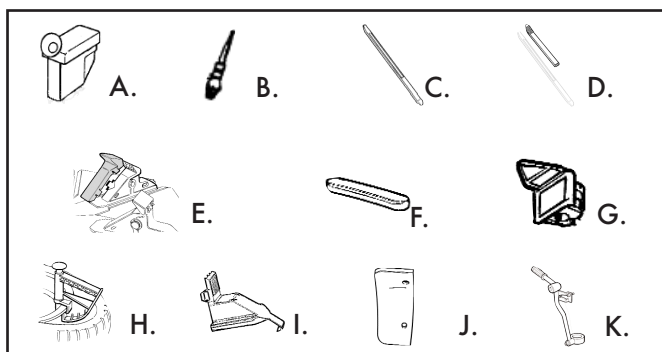
- | | |
|------------------------------------------------------------------------------------------------------------------------------------------------------------------------------------------------------------------------|-------------------------------------------------------------------------|
| A) SP2000 Rotary Bead Presser
2019/Artiglio-10 | No. 255567A |
| B) SP2000 Mounting Kit | |
| <ul style="list-style-type: none"> • A2019 before S/N: 9031389 • A2019 after S/N: 9031389 • A2010 before S/N: 9041149 • A2010 after S/N: 9041149 • Mounting Kit for | No. 244644A
No. 245415A
No. 244644A
No. 245415A
No. 100026A |
| A2024TI AFTER MAY 2004 S/NCA006524 | |
| C) SP2000 Mounting Kit Artiglio-10 | No. 255679A |



Passenger Car Tire Changer Standard Accessories

Models 9220, 2024, 9824

- | | |
|---------------------------------------------------------------|-------------|
| A) Lube Bucket | No. 432825 |
| B) Lube Brush | No. 415248 |
| C) Tire Lever | No. 444238 |
| D) Tire Lever Cover (6) | No. 246241A |
| E) Set of Jaw Protectors (12) | No. 254343 |
| F) M/D Head Bottom Inserts (5) | No. 258898A |
| G) Set of Inserts (10) | No. 254341A |
| H) Bead Clip | No. 435685A |
| I) Jaw Protector for Teeth (12) | No. 260755A |
| J) B/B Blade Protector (6) | No. 258383A |
| K) Bead Pressing Lever* on Machine
except on 9220 and 2024 | No. 242834A |

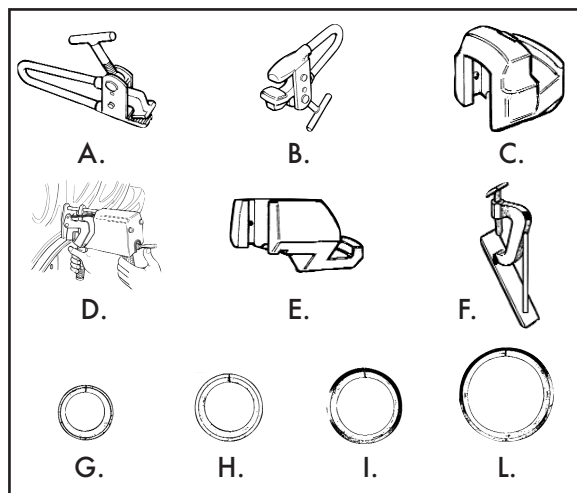


Heavy-Duty Tire Changer Optional Accessories

General Accessory Application

- | | |
|----------------------------------------------------|-------------|
| A) Long Rim Clamp | No. 224201A |
| B) Aluminum Clamp (All Truck Units) | No. 227195A |
| • C) Alloy Rim Clamps (Set of 4) | No. 260137A |
| D) DV 120 Bead Pressing Arm (Truck Tires) | No. 050500A |
| • E) Adapters for Ag Wheels (Set of 4) | No. 237802A |
| F) Skidder Wheel Clamp | No. 251904A |
| G) Locking Adaptor For Allot Rim \varnothing 161 | No. 210007 |
| H) Locking Adaptor For Allot Rim \varnothing 202 | No. 210008 |
| I) Locking Adaptor For Allot Rim \varnothing 211 | No. 210009 |
| L) Locking Adaptor For Allot Rim \varnothing 281 | No. 210010 |

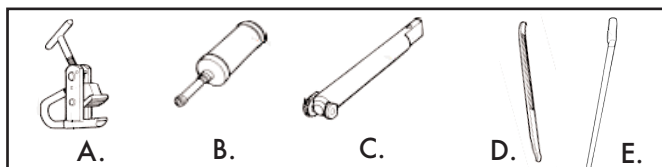
• PRODUCTION UNTIL DIC/2004



Heavy-Duty Tire Changer Standard Accessories

Models AG52 and 1200ECD/ECL-R

- | | |
|------------------------------------|------------|
| A) Rim Pliers | No. 219244 |
| B) Lubricator | No. 435443 |
| C) 36" to 52" Extension (set of 4) | No. 234230 |
| D) Tire Lever | No. 426388 |
| E) Aluminum Bar Lever | No. 236906 |



Note: Because of ongoing product improvements, it is necessary to have the model and serial number available when inquiring about accessories or placing an order. When ordering wheel adapters for Automotive or Motorcycle applications, please provide the model and serial number for the machine.